

2 and 4 Etudes: Desc. Natural BC

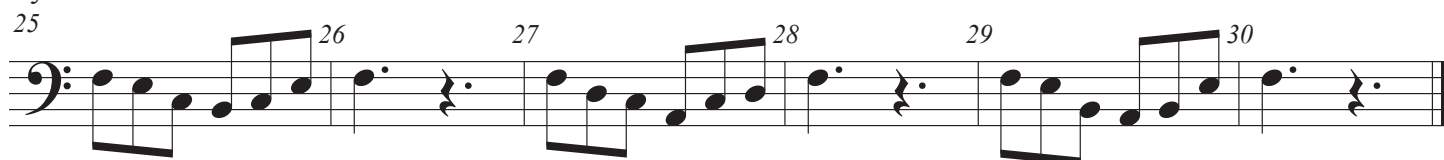
Dorian



Phrygian



Lydian



Mixolydian

37 38 39 40 41 42

43 44 45 46 47 48

The Mixolydian mode section consists of two staves of music in bass clef. The first staff contains measures 37 through 42, and the second staff contains measures 43 through 48. Each measure is marked with its measure number above the staff. The music features a descending eighth-note scale with a dotted quarter note at the end of each measure.

Aeolian (Minor)

49 50 51 52 53 54

55 56 57 58 59 60

The Aeolian (Minor) mode section consists of two staves of music in bass clef. The first staff contains measures 49 through 54, and the second staff contains measures 55 through 60. Each measure is marked with its measure number above the staff. The music features a descending eighth-note scale with a dotted quarter note at the end of each measure.

Locrian

61 62 63 64 65 66

67 68 69 70 71 72

The Locrian mode section consists of two staves of music in bass clef. The first staff contains measures 61 through 66, and the second staff contains measures 67 through 72. Each measure is marked with its measure number above the staff. The music features a descending eighth-note scale with a dotted quarter note at the end of each measure.

Ionian (Major)

73 74 75 76 77 78

79 80 81 82 83 84

The Ionian (Major) mode section consists of two staves of music in bass clef. The first staff contains measures 73 through 78, and the second staff contains measures 79 through 84. Each measure is marked with its measure number above the staff. The music features a descending eighth-note scale with a dotted quarter note at the end of each measure.