

Mixed Trumpet Etudes


By Panaiotis

These melodic etudes are extracted and transcribed from three piano solo collections

Continental Drift

Six Minute-Tours

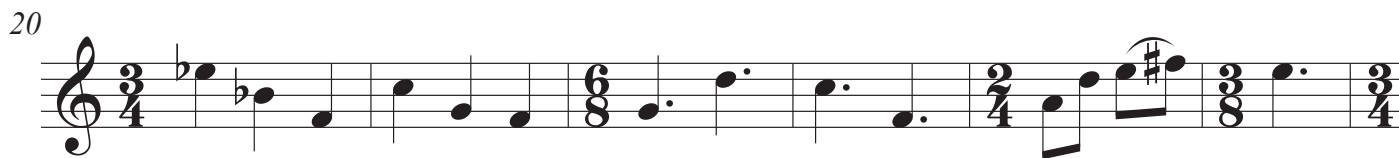
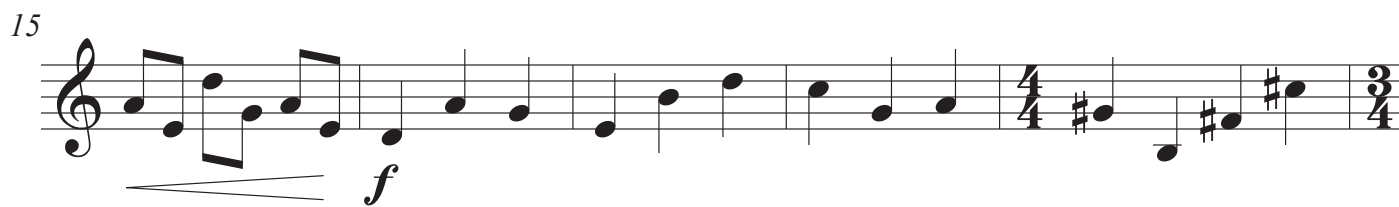
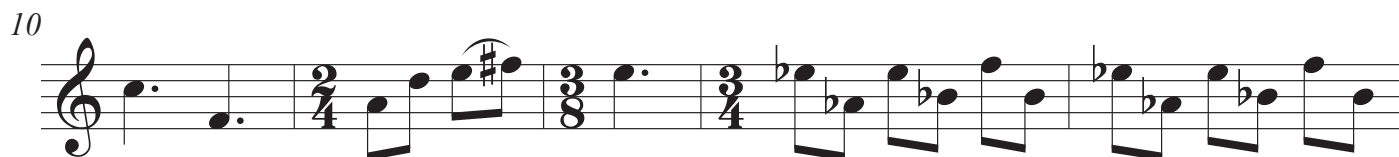
Winter Suite

In all cases, the  remains constant across bar lines.

Down the Road a Bit

Panaiotis

Moderato (♩ = c. 96)



Lava Lake

Panaiotis

The musical score for "Lava Lake" consists of six staves of music, each beginning with a measure number. The notation includes treble clefs, various time signatures (6/8, 9/8, 3/4, 3/4), and dynamic markings such as *p*, *mp*, *mf*, *f*, *pp*, and *rallentando*. The music features a variety of rhythmic patterns, including eighth and sixteenth notes, and rests. The score concludes with a double bar line.

5

9

11

14

16

Lyrical

Panaiotis

$\text{♩} = \text{c. } 108$ *legato e poco rubato*

mp

6

10 *f* *mf*

15 *f*

20 *ff*

24 *mf* *mp*

29

Crystal Cave

Panaiotis

Allegro (♩ = 120)

1
pp

5
p *mp*

9
mf *f* *ff*

12
f *mf* *mp*

16
p *pp* *ff*

Octatonic Express

Panaiotis

Vivace (♩ = 144-176)

6

10

15

19

25

28

31

36

41

45

49

53

56

59

Escarpment

Panaiotis

Moderato (♩ = c. 96)

4

6

10

13

15

p

pp

mp

mf

f

ff