

Easy Meter Etudes 1: Duple 8ths

Panaiotis

1

Exercise 1 consists of 27 measures in bass clef, 4/4 time, with a key signature of two flats. The notes are: 1: G2, 2: A2, 3: Bb2, 4: C3, 5: D3, 6: E3, 7: F3, 8: G3, 9: A3, 10: Bb3, 11: C4, 12: D4, 13: E4, 14: F4, 15: G4, 16: A4, 17: Bb4, 18: C5, 19: D5, 20: E5, 21: F5, 22: G5, 23: A5, 24: Bb5, 25: C6, 26: D6, 27: E6. The piece ends with a double bar line.

2

Exercise 2 consists of 27 measures in bass clef, 4/4 time, with a key signature of two flats. The notes are: 1: G2, 2: A2, 3: Bb2, 4: C3, 5: D3, 6: E3, 7: F3, 8: G3, 9: A3, 10: Bb3, 11: C4, 12: D4, 13: E4, 14: F4, 15: G4, 16: A4, 17: Bb4, 18: C5, 19: D5, 20: E5, 21: F5, 22: G5, 23: A5, 24: Bb5, 25: C6, 26: D6, 27: E6. The piece ends with a double bar line.

3

Exercise 3 consists of 27 measures in bass clef, 4/4 time, with a key signature of two flats. The notes are: 1: G2, 2: A2, 3: Bb2, 4: C3, 5: D3, 6: E3, 7: F3, 8: G3, 9: A3, 10: Bb3, 11: C4, 12: D4, 13: E4, 14: F4, 15: G4, 16: A4, 17: Bb4, 18: C5, 19: D5, 20: E5, 21: F5, 22: G5, 23: A5, 24: Bb5, 25: C6, 26: D6, 27: E6. The piece ends with a double bar line.

4



10



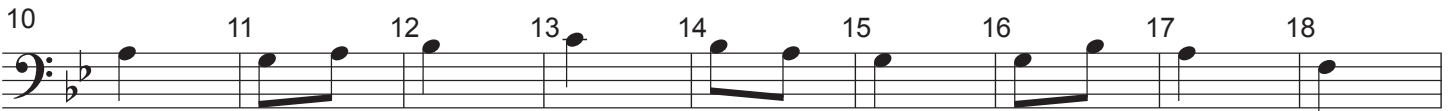
19



5



10



19



6



10



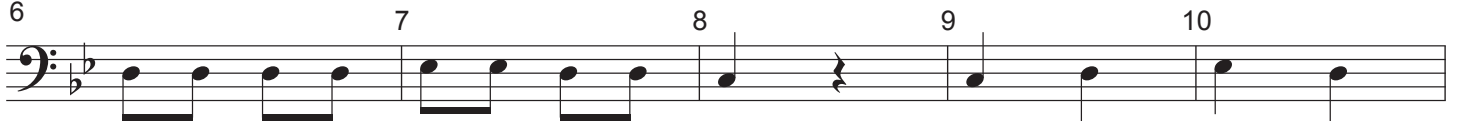
19



7



6



11



8



6



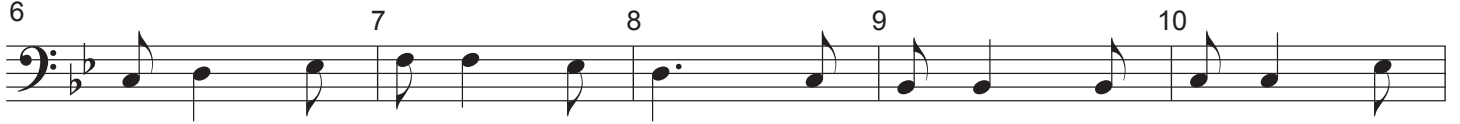
11



9



6



11



10

Exercise 10 is a 16-measure piece in bass clef, 2/4 time. It consists of three staves. The first staff contains measures 1-5, the second staff contains measures 6-11, and the third staff contains measures 12-16. Fingerings are indicated by numbers 2, 3, 4, and 5 above notes. Measure 5 includes a fermata over a dotted quarter note. Measure 9 includes a fermata over a quarter note. The piece ends with a double bar line at the end of measure 16.

11

Exercise 11 is a 16-measure piece in bass clef, 2/4 time. It consists of three staves. The first staff contains measures 1-5, the second staff contains measures 6-11, and the third staff contains measures 12-16. Fingerings are indicated by numbers 2, 3, 4, and 5 above notes. Measure 5 includes a fermata over a dotted quarter note. The piece ends with a double bar line at the end of measure 16.

12

Exercise 12 is a 16-measure piece in bass clef, 2/4 time. It consists of three staves. The first staff contains measures 1-5, the second staff contains measures 6-10, and the third staff contains measures 11-16. Fingerings are indicated by numbers 2, 3, 4, and 5 above notes. Measure 12 includes a fermata over a dotted quarter note. The piece ends with a double bar line at the end of measure 16.