

# Major & Minor Triadic Etudes 1

## Major Triads

Musical score for Major Triads in bass clef, 2/4 time. The score consists of 40 measures, grouped into 10 pairs of two measures each. Each pair is separated by a double bar line with repeat dots. The notes are as follows:

- Measure 1: Bb, C, D
- Measure 2: Bb, C, D
- Measure 3: Bb, C, D
- Measure 4: Bb, C, D
- Measure 5: Bb, C, D
- Measure 6: Bb, C, D
- Measure 7: Bb, C, D
- Measure 8: Bb, C, D
- Measure 9: Bb, C, D
- Measure 10: Bb, C, D
- Measure 11: Bb, C, D
- Measure 12: Bb, C, D
- Measure 13: Bb, C, D
- Measure 14: Bb, C, D
- Measure 15: Bb, C, D
- Measure 16: Bb, C, D
- Measure 17: Bb, C, D
- Measure 18: Bb, C, D
- Measure 19: Bb, C, D
- Measure 20: Bb, C, D
- Measure 21: Bb, C, D
- Measure 22: Bb, C, D
- Measure 23: Bb, C, D
- Measure 24: Bb, C, D
- Measure 25: Bb, C, D
- Measure 26: Bb, C, D
- Measure 27: Bb, C, D
- Measure 28: Bb, C, D
- Measure 29: Bb, C, D
- Measure 30: Bb, C, D
- Measure 31: Bb, C, D
- Measure 32: Bb, C, D
- Measure 33: Bb, C, D
- Measure 34: Bb, C, D
- Measure 35: Bb, C, D
- Measure 36: Bb, C, D
- Measure 37: Bb, C, D
- Measure 38: Bb, C, D
- Measure 39: Bb, C, D
- Measure 40: Bb, C, D

## Minor Triads

41



42 43 44

45



46 47 48 49 50

51



52 53 54 55 56

57



58 59 60 61 62

63



64 65 66 67 68

69



70 71 72 73 74

75



76 77 78 79 80

Detailed description: This page contains 40 measures of music, numbered 41 to 80, arranged in seven rows. Each row contains five measures. The music is written in bass clef and consists of eighth-note triads. The triads are: 41: Bb2, Bb3, Bb4; 42: Bb2, Bb3, Bb4; 43: Bb2, Bb3, Bb4; 44: Bb2, Bb3, Bb4; 45: Bb2, Bb3, Bb4; 46: Bb2, Bb3, Bb4; 47: Bb2, Bb3, Bb4; 48: Bb2, Bb3, Bb4; 49: Bb2, Bb3, Bb4; 50: Bb2, Bb3, Bb4; 51: Bb2, Bb3, Bb4; 52: Bb2, Bb3, Bb4; 53: Bb2, Bb3, Bb4; 54: Bb2, Bb3, Bb4; 55: Bb2, Bb3, Bb4; 56: Bb2, Bb3, Bb4; 57: Bb2, Bb3, Bb4; 58: Bb2, Bb3, Bb4; 59: Bb2, Bb3, Bb4; 60: Bb2, Bb3, Bb4; 61: Bb2, Bb3, Bb4; 62: Bb2, Bb3, Bb4; 63: Bb2, Bb3, Bb4; 64: Bb2, Bb3, Bb4; 65: Bb2, Bb3, Bb4; 66: Bb2, Bb3, Bb4; 67: Bb2, Bb3, Bb4; 68: Bb2, Bb3, Bb4; 69: Bb2, Bb3, Bb4; 70: Bb2, Bb3, Bb4; 71: Bb2, Bb3, Bb4; 72: Bb2, Bb3, Bb4; 73: Bb2, Bb3, Bb4; 74: Bb2, Bb3, Bb4; 75: Bb2, Bb3, Bb4; 76: Bb2, Bb3, Bb4; 77: Bb2, Bb3, Bb4; 78: Bb2, Bb3, Bb4; 79: Bb2, Bb3, Bb4; 80: Bb2, Bb3, Bb4.

## Major Triads +(m7, M7, 8va)

81 82 83 84

85 86 87 88

89 90 91 92

93 94 95 96

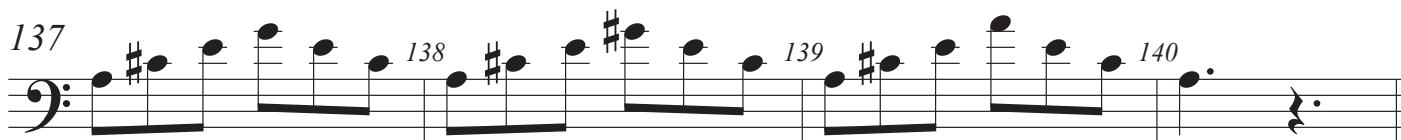
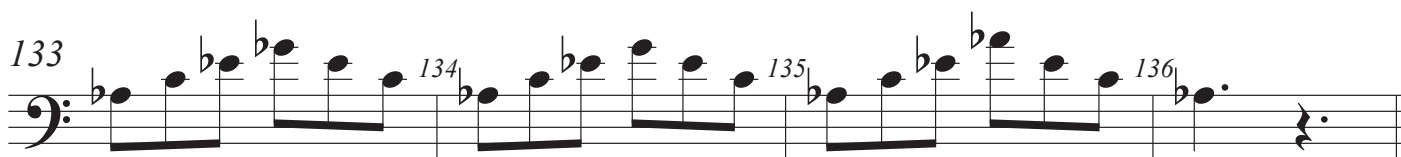
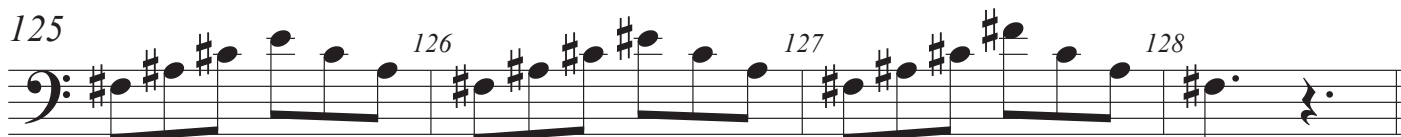
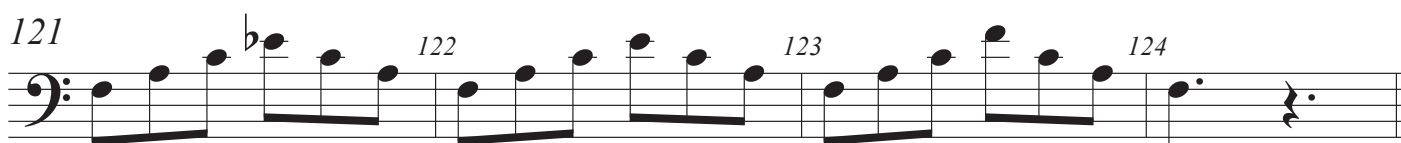
97 98 99 100

101 102 103 104

105 106 107 108

109 110 111 112

The image shows a musical score for a piece titled "Major Triads +(m7, M7, 8va)". The score is written in bass clef with a 6/8 time signature. It consists of eight staves of music, each containing four measures. The measures are numbered sequentially from 81 to 112. The music features various triads and chords, including major triads, minor 7th chords (m7), major 7th chords (M7), and octaves (8va). The key signature changes throughout the piece, with flats and sharps appearing in various measures. The notation includes eighth notes, quarter notes, and dotted quarter notes, often beamed together in groups of four.



## Minor Triads +(m7, M7, 8va)

145 146 147 148



Staff 145-148: Four measures of music in bass clef. Measure 145: G2, Bb2, D3. Measure 146: G2, Bb2, D3 with a sharp sign above the D3. Measure 147: G2, Bb2, D3. Measure 148: G2, Bb2, D3.

149 150 151 152



Staff 149-152: Four measures of music in bass clef. Measure 149: G2, Bb2, D3 with a flat sign above the Bb2. Measure 150: G2, Bb2, D3. Measure 151: G2, Bb2, D3 with a flat sign above the Bb2. Measure 152: G2, Bb2, D3.

153 154 155 156



Staff 153-156: Four measures of music in bass clef. Measure 153: G2, Bb2, D3. Measure 154: G2, Bb2, D3 with a sharp sign above the D3. Measure 155: G2, Bb2, D3. Measure 156: G2, Bb2, D3.

157 158 159 160



Staff 157-160: Four measures of music in bass clef. Measure 157: G2, Bb2, D3 with a flat sign above the Bb2. Measure 158: G2, Bb2, D3. Measure 159: G2, Bb2, D3 with a flat sign above the Bb2. Measure 160: G2, Bb2, D3.

161 162 163 164



Staff 161-164: Four measures of music in bass clef. Measure 161: G2, Bb2, D3 with a sharp sign above the D3. Measure 162: G2, Bb2, D3 with a sharp sign above the D3. Measure 163: G2, Bb2, D3 with a sharp sign above the D3. Measure 164: G2, Bb2, D3.

165 166 167 168



Staff 165-168: Four measures of music in bass clef. Measure 165: G2, Bb2, D3 with a flat sign above the Bb2. Measure 166: G2, Bb2, D3 with a flat sign above the Bb2. Measure 167: G2, Bb2, D3 with a flat sign above the Bb2. Measure 168: G2, Bb2, D3.

169 170 171 172



Staff 169-172: Four measures of music in bass clef. Measure 169: G2, Bb2, D3 with a sharp sign above the D3. Measure 170: G2, Bb2, D3 with a sharp sign above the D3. Measure 171: G2, Bb2, D3 with a sharp sign above the D3. Measure 172: G2, Bb2, D3 with a sharp sign above the D3.

173 174 175 176



Staff 173-176: Four measures of music in bass clef. Measure 173: G2, Bb2, D3. Measure 174: G2, Bb2, D3 with a sharp sign above the D3. Measure 175: G2, Bb2, D3. Measure 176: G2, Bb2, D3.

